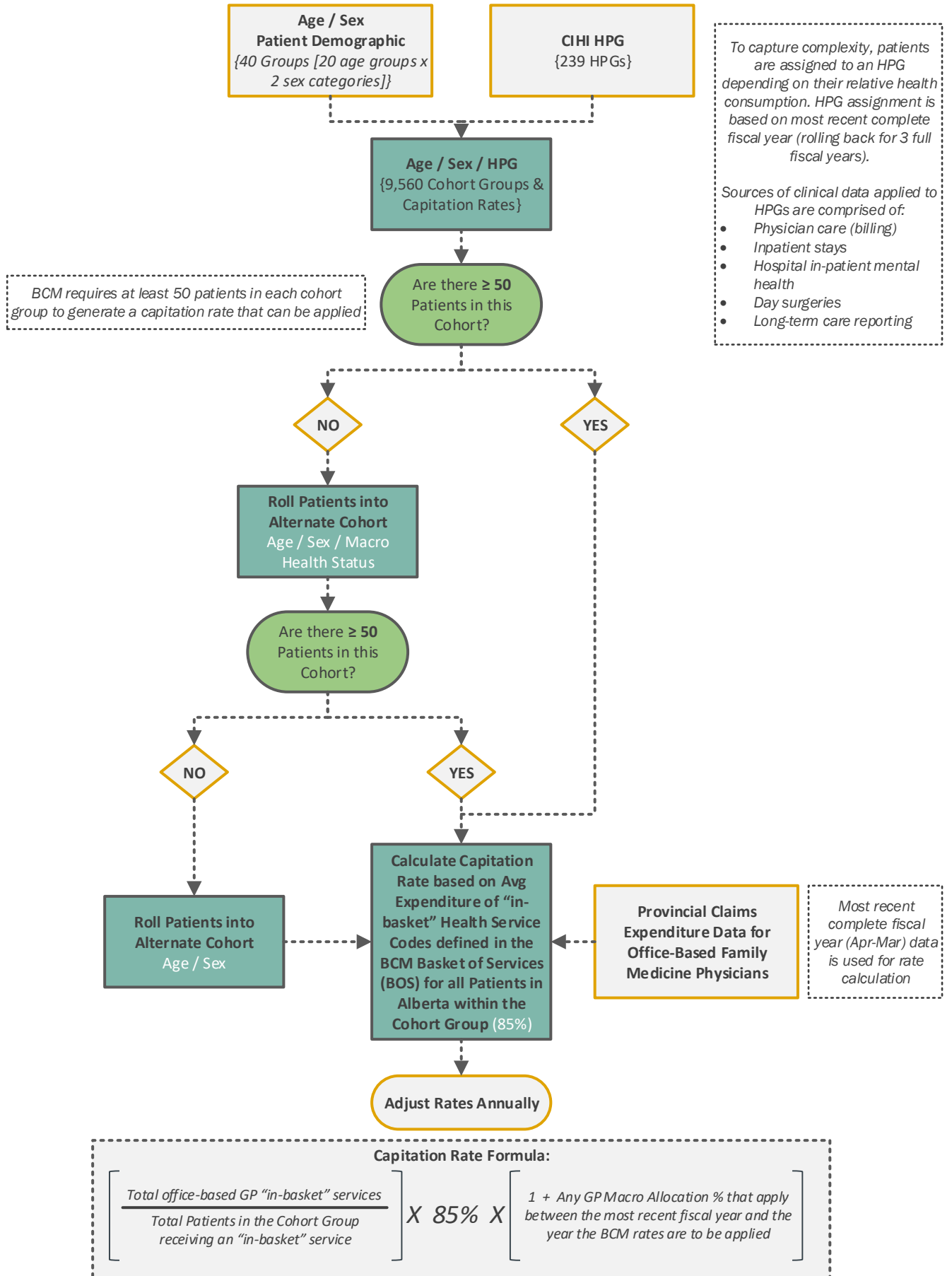


OVERVIEW of RATE METHODOLOGY for the BLENDED CAPITATION MODEL (BCM)

Capitation Rate using CIHI Population Health Profile Groupings (HPGs)



Notes:

Cohort groups are created based on several variables concerning patient population demographics, such as: Age (5 year bands), Sex, and Patient Morbidity (HPG). Determination of rates will be completed on an annual basis and if applicable, negotiated increase adjustments will be applied.